

SDR 47/2012

22 March 2012

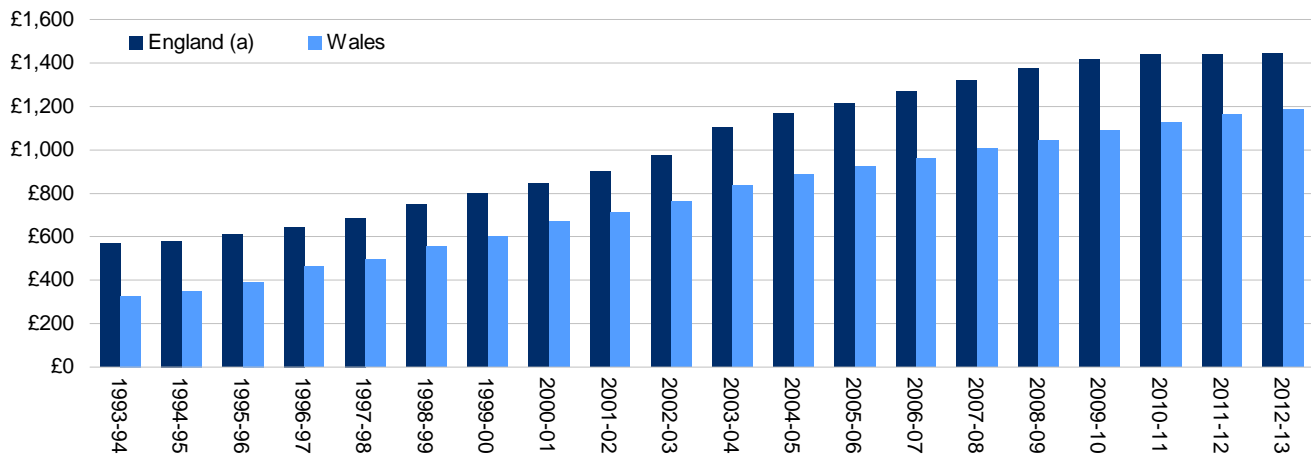
COUNCIL TAX LEVELS IN WALES: 2012-13

Council tax is a tax on domestic property set by local authorities in order to collect sufficient revenue to meet their demand. It replaced the community charge on 1 April 1993. It is calculated based on the council tax band assigned to each dwelling. Properties in each local authority are assigned to one of nine valuation bands: A to I. This release provides details of the levels of average band D council tax in Welsh local authorities for the financial year 2012-13 and changes over 2011-12.

Key points

- Average band D council tax for Wales for 2012-13 is £1,188. This includes £972 for county councils, £190 for police authorities and £26 for community councils. Figures for billing authorities, including the police authority elements, vary from £945 in Pembrokeshire to £1,463 in Blaenau Gwent (table 1 and chart 3).
- County council increases in band D council tax for 2012-13 average £19 or 1.9%. Police authority increases average £7 or 3.9%. These increases combine to produce an average band D rise of £26 or 2.2% (table 2 and chart 5). This is the smallest percentage increase since council tax began in 1993-94.
- Isle of Anglesey has the largest band D percentage increase (including community council and police elements) of 4.1%. Monmouthshire has the smallest overall band D percentage increase of 0.4% with a small decrease to their county council element (table 2).
- In England, around 85% of authorities are estimated to freeze council tax in 2012-13 in exchange for additional funding from Central Government. The average rise for English authorities is 0.3%
- Welsh average band D council tax is 82% of the latest estimated figure of £1,444 for England.

Chart 1: Average band D council tax



(a) England figures based on estimates for 2012-13 from the Chartered Institute of Public Finance and Accountancy.

Additional information is available at: www.statswales.wales.gov.uk

Statistician: Anthony Newby

Tel: 029 2082 5355

E-mail: stats.finance@wales.gsi.gov.uk

Next update: March 2013 (provisional)

Twitter: www.twitter.com/statisticswales | www.twitter.com/ystadegaucymru

Cyhoeddwyd gan Y Gwasanaethau Gwybodaeth a Dadansoddi
Llywodraeth Cymru, Parc Cathays, Caerdydd, CF10 3NQ
Ffôn – Swyddfa'r Wasg **029 2089 8099**, Ymholiadau Cyhoeddus **029 2082 3332**

www.cymru.gov.uk/ystadegau

Issued by Knowledge and Analytical Services

Welsh Government, Cathays Park, Cardiff, CF10 3NQ

Telephone – Press Office **029 2089 8099**, Public Enquiries **029 2082 5050**

www.wales.gov.uk/statistics



Llywodraeth Cymru
Welsh Government

Council tax can be measured in 'band D' or in 'per dwelling' terms. Band D has historically been used as the standard for comparing council tax levels between and across local authorities. This measure is not affected by the varying distribution of properties in bands that can be found across authorities. The 'per dwelling' calculation uses [chargeable dwelling](#) figures which gives an indication of the average amount of council tax that is actually paid per household.

Table 1 shows the average band D and the average per dwelling figures for council tax levels across all billing authorities. The table also shows county, community council and police elements. The average council tax per dwelling ranges from £851 in Caerphilly to £1,369 in Monmouthshire.

Table 1: Breakdown of band D council tax in Wales, 2012-13

	Average band D	Of which:			Average per dwelling
		County council element	Community council element (a)	Police authority element	
Isle of Anglesey	1,140	894	31	215	1,022
Gwynedd	1,278	1,033	30	215	1,109
Conwy	1,130	885	31	215	1,037
Denbighshire	1,306	1,053	38	215	1,170
Flintshire	1,184	932	37	215	1,127
Wrexham	1,166	914	37	215	1,068
Powys	1,168	936	33	199	1,133
Ceredigion	1,169	942	28	199	1,089
Pembrokeshire	945	720	26	199	867
Carmarthenshire	1,216	951	66	199	1,016
Swansea	1,170	991	10	169	988
Neath Port Talbot	1,416	1,209	38	169	1,036
Bridgend	1,296	1,097	30	169	1,076
Vale of Glamorgan	1,149	940	39	169	1,174
Cardiff	1,108	937	2	169	1,100
Rhondda Cynon Taf	1,340	1,149	22	169	959
Merthyr Tydfil	1,377	1,207	1	169	938
Caerphilly	1,100	898	10	193	851
Blaenau Gwent	1,463	1,253	17	193	934
Torfaen	1,208	975	40	193	949
Monmouthshire	1,229	1,004	32	193	1,369
Newport	1,023	826	4	193	890
Wales average	1,188	972	26	190	1,036

(a) The average community council element across the county.

Chart 2 shows average per dwelling compared with the Wales average in 2012-13. Caerphilly's average per dwelling is £185 less than the Welsh average and Monmouthshire is £333 more than the Wales average.

Chart 2: Difference in average council tax per dwelling compared with the Welsh average

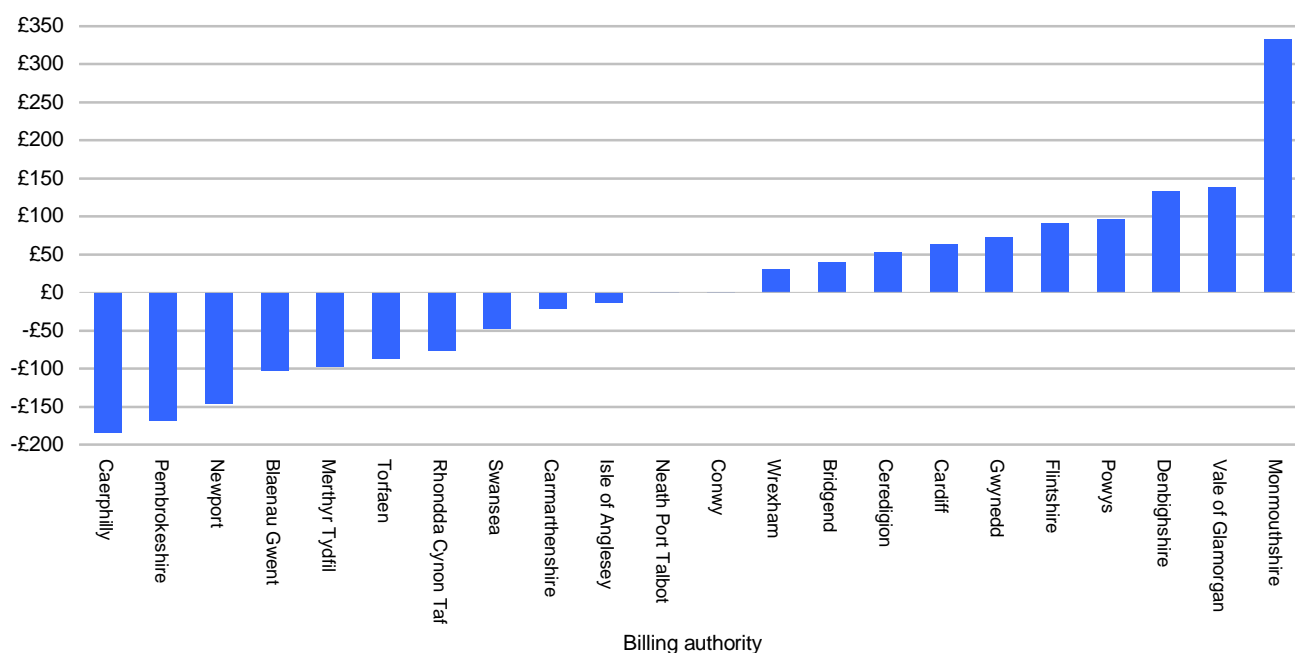


Chart 3 shows the average band D council tax for all billing authorities. Blaenau Gwent has the largest average band D council tax whilst Pembrokeshire has the smallest average band D council tax.

Chart 3: Average band D council tax, 2012-13

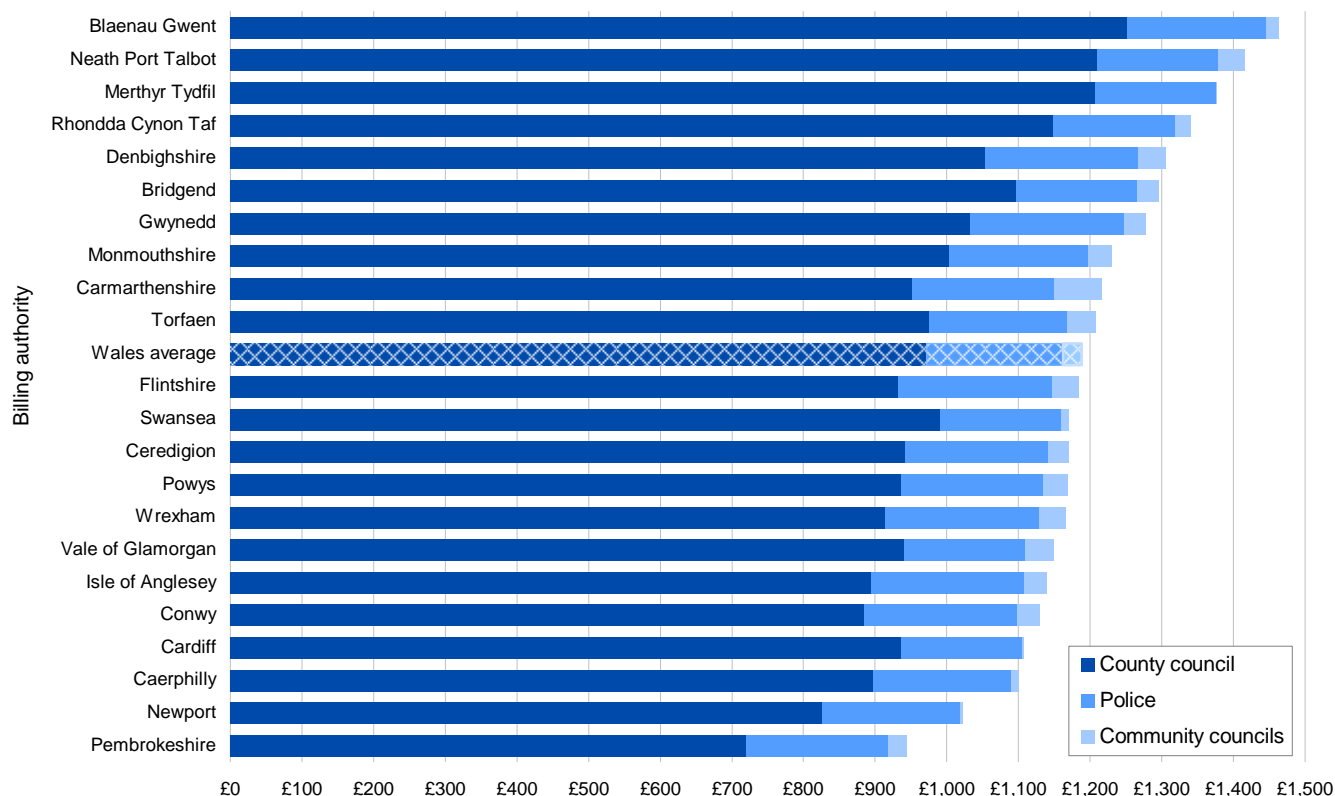


Table 2 shows the increases in average band D council tax compared to the previous year for counties (including community councils) and police. Monmouthshire is the only authority in Wales to reduce the county element of council tax. Swansea, Bridgend and Caerphilly have frozen their county element of council tax. Of the police authorities, Dyfed Powys Police has the largest band D increase of £9 or 5.0% and North Wales Police authority has the smallest band D percentage increase of 2.5%.

Table 2: Increases in average band D council tax

	2011-12 £	2012-13 £	Overall increase £	Of which:		Overall increase %	Due to:		Police authority area
				(a) County £	Police £		(a) County %	Police %	
Isle of Anglesey	1,094	1,140	45	40	5	4.1	4.5	2.5	
Gwynedd	1,237	1,278	41	36	5	3.3	3.5	2.5	
Conwy	1,089	1,130	42	36	5	3.8	4.1	2.5	North Wales
Denbighshire	1,270	1,306	36	31	5	2.8	2.9	2.5	
Flintshire	1,151	1,184	33	28	5	2.9	3.0	2.5	
Wrexham	1,135	1,166	31	25	5	2.7	2.7	2.5	
Powys	1,138	1,168	31	21	9	2.7	2.2	5.0	Dyfed Powys
Ceredigion	1,133	1,169	37	27	9	3.2	2.9	5.0	
Pembrokeshire	923	945	22	12	9	2.4	1.7	5.0	
Carmarthenshire	1,188	1,216	28	19	9	2.4	1.9	5.0	
Swansea	1,162	1,170	8	0	8	0.7	0.0	5.0	
Neath Port Talbot	1,384	1,416	33	24	8	2.3	2.0	5.0	
Bridgend	1,288	1,296	8	0	8	0.6	0.0	5.0	South Wales
Vale of Glamorgan	1,123	1,149	25	17	8	2.2	1.8	5.0	
Cardiff	1,086	1,108	21	13	8	2.0	1.4	5.0	
Rhondda Cynon Taf	1,303	1,340	37	29	8	2.8	2.5	5.0	
Merthyr Tydfil	1,343	1,377	34	26	8	2.5	2.2	5.0	
Caerphilly	1,095	1,100	5	0	5	0.5	0.0	2.7	
Blaenau Gwent	1,426	1,463	37	32	5	2.6	2.6	2.7	Gwent
Torfaen	1,180	1,208	28	23	5	2.4	2.3	2.7	
Monmouthshire	1,225	1,229	4	-1	5	0.4	-0.1	2.7	
Newport	995	1,023	28	23	5	2.9	2.9	2.7	
Wales average	1,162	1,188	26	19	7	2.2	1.9	3.9	

(a) Including community council precepts.

Chart 4 shows the average increases in council tax compared to the previous year. The average increase for Wales is £26. This comprised of £19 for county councils and £7 for police.

Chart 4: Increase in average band D council tax

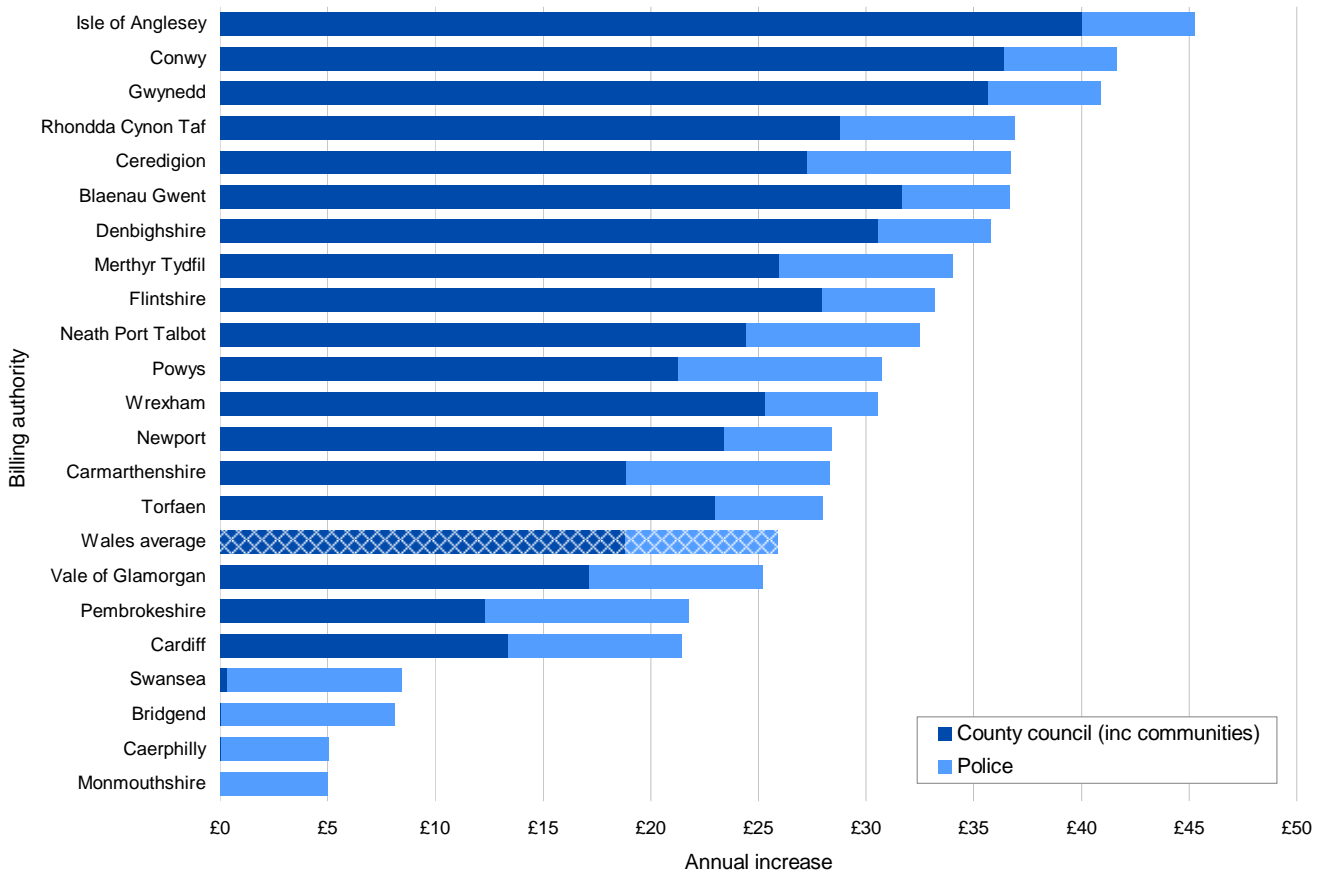
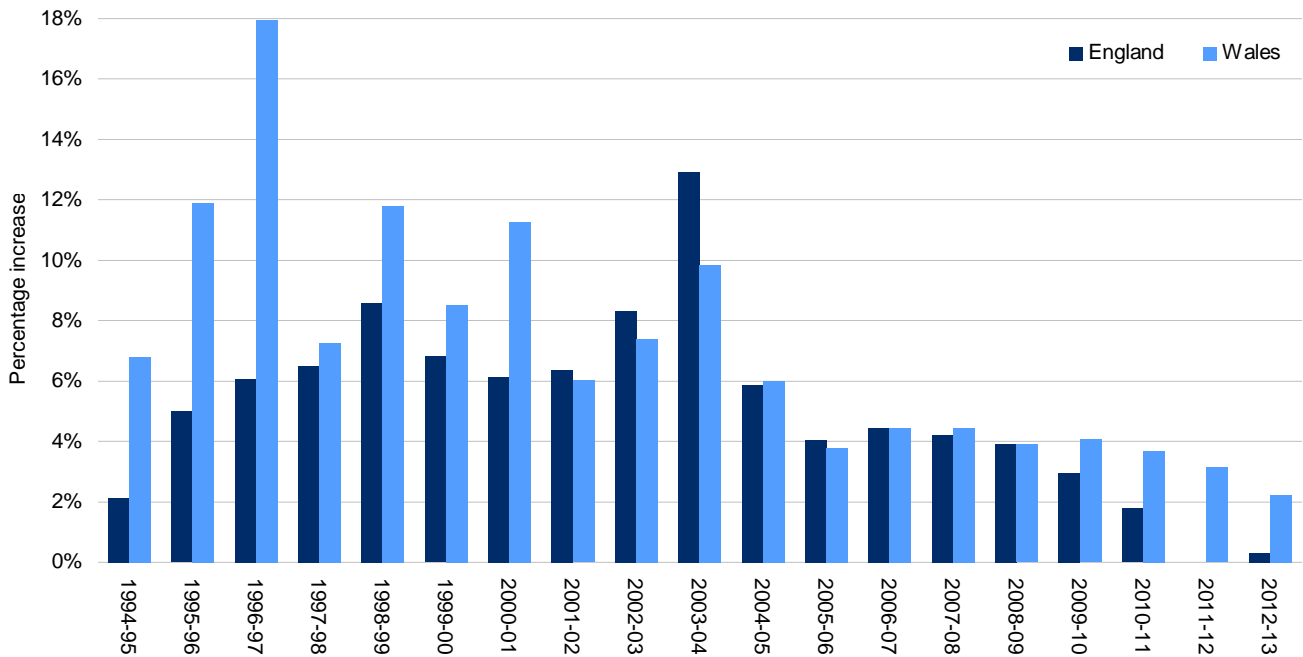


Chart 5 shows council tax rising faster in Wales up to 2000-01, albeit from a lower base. From 2001-02 to 2003-04 England had higher increases. From 2004-05 to 2008-09 the increases were similar. From 2009-10 to 2012-13 figures show a higher increase in Wales than in England.

Chart 5: Year-on-year increase in band D council tax (a)



(a) Band D council tax levels in England did not increase in 2011-12.

Table 3 shows that budget requirement has increased on average by 0.7% for counties and decreased by 2.9% for police.

Table 3: Budget requirement and council tax income

	Budget requirement (a)				Council tax income (£m)	CT income as % of budget
	2011-12 (£m)	2012-13 (£m)	Change			
			(£m)	%		
Counties:						
Isle of Anglesey	119.8	120.0	0.2	0.1	27.6	23
Gwynedd	219.0	220.8	1.9	0.9	52.8	24
Conwy	188.0	189.3	1.3	0.7	45.3	24
Denbighshire	176.7	178.9	2.2	1.2	41.5	23
Flintshire	242.1	243.4	1.4	0.6	59.0	24
Wrexham	209.2	212.5	3.3	1.6	49.5	23
Powys	235.0	235.3	0.3	0.1	57.3	24
Ceredigion	129.3	129.2	-0.1	-0.0	29.3	23
Pembrokeshire	198.3	199.4	1.1	0.5	39.3	20
Carmarthenshire	316.8	320.1	3.3	1.0	69.1	22
Swansea	385.7	388.0	2.3	0.6	87.9	23
Neath Port Talbot	252.6	254.9	2.3	0.9	57.1	22
Bridgend	234.4	235.7	1.2	0.5	56.0	24
Vale of Glamorgan	203.6	205.2	1.6	0.8	54.0	26
Cardiff	521.4	530.4	9.0	1.7	129.4	24
Rhondda Cynon Taf	426.9	430.9	3.9	0.9	85.2	20
Merthyr Tydfil	106.7	106.8	0.1	0.1	21.1	20
Caerphilly	303.6	306.4	2.8	0.9	52.8	17
Blaenau Gwent	132.9	132.6	-0.3	-0.2	25.2	19
Torfaen	160.3	160.7	0.4	0.2	31.4	20
Monmouthshire	140.5	139.4	-1.1	-0.8	45.0	32
Newport	237.4	237.5	0.1	0.1	44.7	19
Total counties	5,140.3	5,177.3	37.1	0.7	1,160.3	22
Dyfed Powys Police Authority	97.3	95.7	-1.6	-1.7	41.7	44
Gwent Police Authority	121.7	117.5	-4.3	-3.5	39.8	34
North Wales Police Authority	141.5	137.6	-4.0	-2.8	60.0	44
South Wales Police Authority	257.3	249.3	-8.0	-3.1	79.1	32
Total police authorities	617.9	600.1	-17.9	-2.9	220.6	37
Total Wales	5,758.2	5,777.4	19.2	0.3	1,380.9	24

(a) The data is not adjusted for transfers of specific grants into the local government settlement. County council budget requirements are funded through council tax and non-specific central government support, i.e. revenue support grant and re-distributed non-domestic rates (chart 6). Police authorities also receive police grant direct from the Home Office (chart 7). Expenditure is further supplemented by specific grants, more details of which will be available later in the year.

Charts 6 and 7 show the funding of budget requirement separately for counties and police. The proportion of budget met from council tax for police varies from 32% for South Wales Police Authority to 44% for North Wales Police Authority and Dyfed Powys Police Authority (table 3). The proportion for counties has remained at 22% (chart 6). This varies by county from 17% for Caerphilly to 32% for Monmouthshire (table 3).

Chart 6: Funding of Budget Requirement, 2012-13 Counties

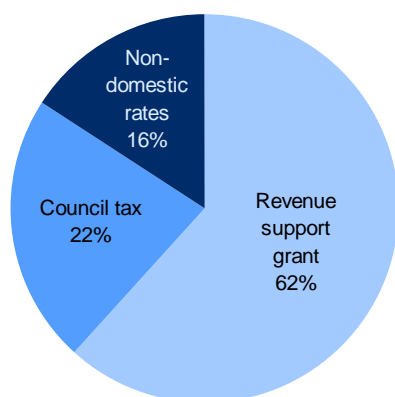
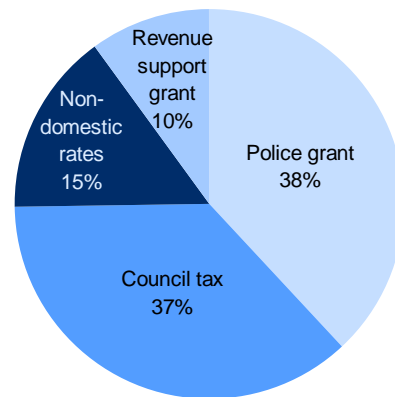


Chart 7: Funding of Budget Requirement, 2012-13 Police



TECHNICAL NOTES ON COUNCIL TAX LEVELS IN WALES

Billing

County and county borough councils are known as billing authorities, i.e. they collect council tax on behalf of the other charging authorities, namely police authorities and local community councils.

Quality

We publish a detailed [quality report](#) on Welsh Local Government Finance statistics. We also publish detail on our [users](#). We would appreciate any [feedback](#) on the content and usefulness of the quality report.

Data sources

The main sources of information on council tax levels in Wales are the budget requirement (BR) returns from unitary and police authorities.

Wales collect 100% of returns from all twenty-two unitary and four police authorities. The Chartered Institute of Public Finance and Accountancy (CIPFA) supplies figures for England. These are estimates based on data available at time of publication.

Rounding

In tables where figures have been rounded to the nearest final digit there may be an apparent discrepancy between the sum of the constituent items and the total as shown.

Accessing the data

Much of the data behind the charts and tables shown in this release can be found on Statswales (a free-to-use internet service that allows visitors to view, manipulate, create and download tables from the most up to date and detailed official data in Wales). Please select "Local Government Finance" at the navigation screen of the following site: www.statswales.wales.gov.uk

→Local Government Finance

→Council Tax

→Levels

Further information

Statistics on council tax levels are also published in both [England](#) and [Scotland](#).

Feedback

We actively encourage feedback of our statistics. If you have any comments or queries, or require further information or copies, then please contact using the details below or fill out a [Feedback form](#).

Local Government Finance Statistics Unit
Knowledge and Analytical Services
Welsh Government
Cathays Park
Cardiff
CF10 3NQ

Email: stats.finance@wales.gsi.gov.uk
Tel: 029 2082 5355
Fax: 029 2082 5350